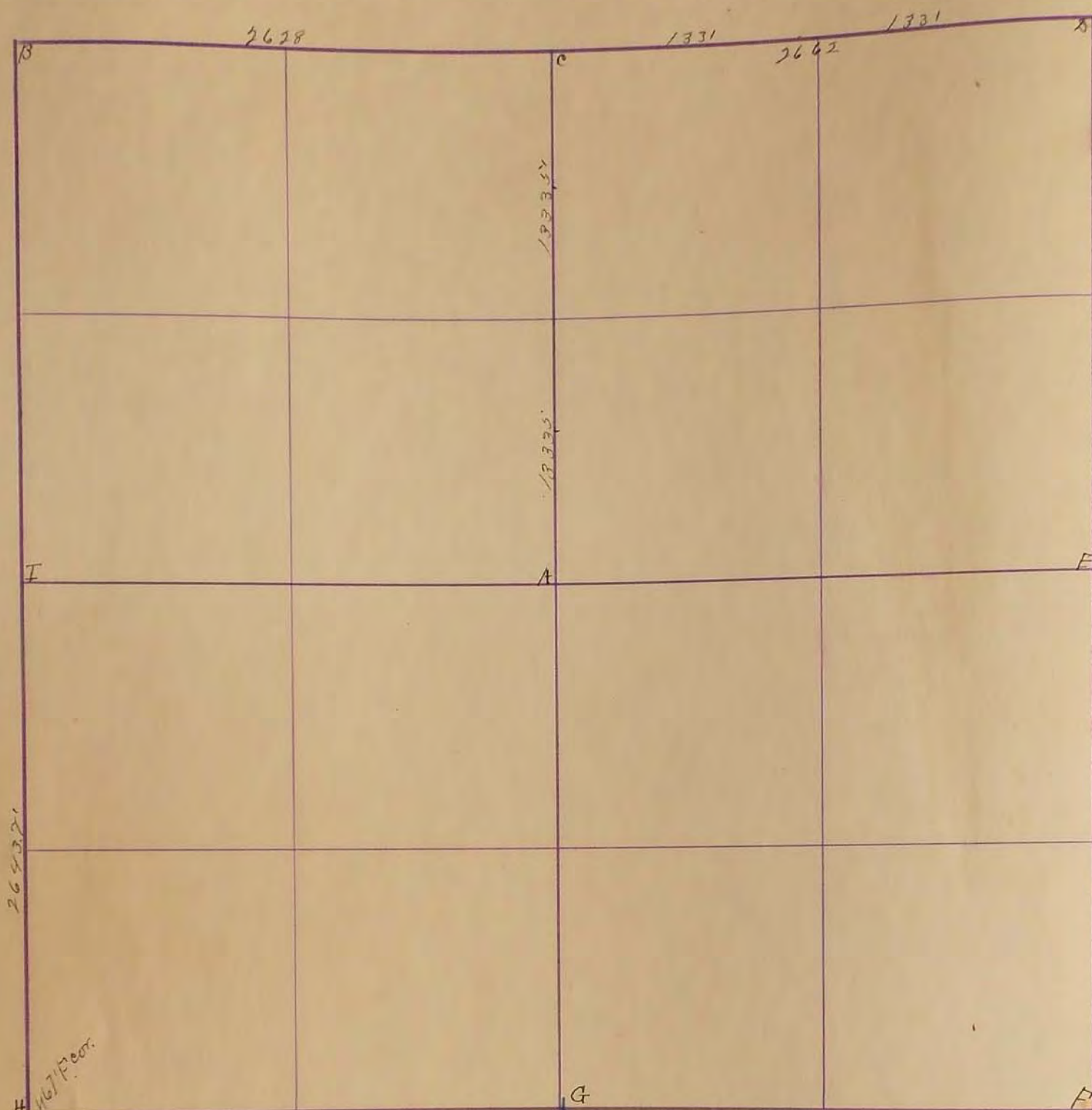


SURVEYOR'S RECORD

Section 30

Township 105

Range 40



H 467' Post
May 10 1925
B 3 stones T.P. 39.5' S.E. T.P. 54' N.W. F. Post 42.8' N.W.

Bx Hub Rail 170 South to both sides
C

D. stone on line with N.S. fences
and in center of grade

E.
F.
G.

H. stone in grade F. cor. 467' N.E.
and 467' S.W.

I. stone in grade Fence on line E 32.5'

"F" "Placed Stone": R.P. Tack in 2nd fence post S.W. 47.5': R.P.

Edge of steel fence post S.E. 54.1'

"G" "Found Stone": R.P. Edge of steel cor post south 32.7':

R.P. Edge of second steel fence post S.E. 46.8'

"H" "Found Stone": R.P. Tack in cor fence post N.E. 46.5': R.P.

Tack in cor. fence post S.W. 47.8'

F.A. March 1904

30
31

2640
100
2623.5

SURVEY No. _____
 Section 30 Town 105 Range 40



FIELD NOTES.

May 10, 1925

- B 3 stones 8 T.P. 395 S.E. T.P. 54' N.W. F. Post 42.5 N.W. Br. Hub rail 170 South to both sides
- C Stone on line with NTS fences, and in center of grade
- E
- F
- G
- H Stone in grade Fcor. 46.7 N.E. + 46.7 S.W.
- I Stone in grade - fence on line east 32.5'
- "G" "Found Stone" R.P. Edge of Steel cor post south 32.7': R.P. Edge of second steel fence post S.E. 46.8'
- "H" "Found Stone" R.P. Tack in cor fence post N.E. 46.5': R.P. Tack in cor fence post S.W. 47.2'
- "F" "Placed Stone" R.P. Tack in 2nd fence post S.W. 47.5': R.P. Edge of Steel fence post S.E. 54.1'

1934 F.H. March